

AIAPGET 2020 Answer Key

www.homoeoadda.in

With Full care compiled by:

Homoeoadda

www.homoeoadda.in

Subject : AIAPGET_Homeopathy

Question ID:- 8

Thoracic duct drains the following areas except:-

Options:-

- .Left lower limb , Option ID :- 30 ,
- .Left upper limb , Option ID :- 29 ,
- .Right lower limb , Option ID :- 32 ,
- .Right upper limb , Option ID :- 31, **Answer Right upper limb**

Question ID:- 9

“Charcot’s artery of cerebral haemorrhage” is a branch of:- Options:-

- .Anterior cerebral artery , Option ID :- 33 ,
- .Anterior choroidal artery , Option ID :- 35 ,
- .Middle cerebral artery , Option ID :- 34 ,
- .Posterior cerebral artery , Option ID :- 36, **Answer Middle cerebral artery**

Question ID:- 10

Uterine artery is a branch of which artery? Options:-

- .Abdominal aorta , Option ID :- 39 ,

- .Common iliac , Option ID :- 37 ,
- .External iliac , Option ID :- 38 ,
- .Internal iliac , Option ID :- 40, **Answer Internal iliac**

Question ID:- 11

Transpyloric plane passes through:- Options:-

- .Body of 1st lumbar vertebra near its lower border , Option ID :- 43 ,
- .Body of 2nd lumbar vertebra near its upper border , Option ID :- 44 ,
- .Midway between sternal angle and pubic symphysis , Option ID :- 42 ,
- .Tip of 10th rib , Option ID :- 41,

Answer Body of 1st lumbar vertebra near its lower border

Question ID:- 12

Given below are two statements.

Statement I: Saphenous nerve is a branch of femoral nerve.

Statement II: Extensor digitorum brevis is present on the dorsum of foot.

In the light of the above statements, choose the most appropriate answer from the options given below:-

Options:-

- .Both Statement I and Statement II are correct , Option ID :- 45 ,
- .Both Statement I and Statement II are incorrect , Option ID :- 46 ,
- .Statement I is correct but Statement II is incorrect , Option ID :- 47 ,
- .Statement I is incorrect but Statement II is correct , Option ID :- 48, **Answer Both Statement I and Statement II are correct**

www.homoeoadda.in

Question ID:- 13

Which one of the following muscle is a flexor of elbow joint despite being supplied by an 'extensor' nerve?

Options:-

- .Anconeus, Option ID :- 50 ,
- .Brachioradialis, Option ID :- 51 ,
- .Supinator, Option ID :- 52 ,
- .Triceps, Option ID :- 49, **Answer Brachioradialis**

Question ID:- 14

The taste sensation from the anterior two third of the tongue is transmitted through:- Options:-

- .Facial nerve , Option ID :- 54 ,
- .Glossopharyngeal nerve , Option ID :- 55 ,
- .Hypoglossal nerve , Option ID :- 56 ,
- .Vagus nerve , Option ID :- 53, Answer Facial nerve

Question ID:- 15

Features of Cushing's syndrome include:- Options:-

- .Hypoglycemia, Option ID :- 59 ,
- .Hypotension, Option ID :- 60 ,
- .Salt and water retention, Option ID :- 58 ,
- .Thickening of skin, Option ID :- 57, **Answer Salt and water retention**

Question ID:- 16

Regarding composition of Bile, the Gallbladder Bile when compared to Liver bile has:-

- A. More water
- B. More Bile Salts
- C. More calcium
- D. More Bicarbonate

Choose the correct answer from the options given below:- Options:-

.A and D only, Option ID :- 63 ,

.A, B and C Only, Option ID :- 61 ,

.B and C only, Option ID :- 62 ,

.B, C and D only, Option ID :- 64, **Answer B and C only**

Question ID:- 17

Given below are two statements: one is labeled as Assertion A and the other is labeled as Reason R.

Assertion A: ADH is a water insoluble hormone.

Reason R: ADH is a polypeptide and needs receptors on the cell membrane to work on DCT.

In the light of the above statements, choose the correct answer from the options given below:-

Options:-

.A is false but R is true, Option ID :- 68 ,

.A is true but R is false, Option ID :- 67 ,

.Both A and R are true and R is the correct explanation of A, Option ID :- 65 ,

.Both A and R are true but R is NOT the correct explanation of A, Option ID :- 66, **Answer A is false but R is true**

Question ID:- 18

Given below are two statements.

Statement I: Basophils release Bradykinin, Secretin, Major Basic Protein and Heparin. Statement II: Eosinophil release Bradykinin, Secretin, Major Basic Protein and Heparin.

In the light of the above statements, choose the most appropriate answer from the options given below:-

Options:-

.Both Statement I and Statement II are correct, Option ID :- 69 ,

- .Both Statement I and Statement II are incorrect, Option ID :- 70 ,
- .Statement I is correct but Statement II is incorrect, Option ID :- 71 ,
- .Statement I is incorrect but Statement II is correct, Option ID :- 72, **Answer Both Statement I and Statement II are incorrect**

Question ID:- 19

The major contributor of weight gain in the first trimester of pregnancy is:- Options:-

- .Fat deposition, Option ID :- 75 ,
- .Fetal weight, Option ID :- 73 ,
- .Placental weight, Option ID :- 74 ,
- .Uterine weight, Option ID :- 76, **Answer Fat deposition**

Question ID:- 20

Bone tumour arising from epiphysis is:- Options:-

- .Chondrosarcoma, Option ID :- 78 ,
- .Ewing's Sarcoma, Option ID :- 79 ,
- .Giant cell tumour of bone, Option ID :- 80 ,
- .Osteosarcoma, Option ID :- 77, **Answer Giant cell tumour of bone**

Question ID:- 21

Among the following, what are the changes seen in iron deficiency anemia? Options:-

- .Serum Iron-decreased & Iron binding Capacity-decreased, Option ID :- 81 ,
- .Serum Iron-decreased & Iron binding Capacity-Increased, Option ID :- 83 ,
- .Serum Iron-decreased & Iron binding Capacity-Normal, Option ID :- 84 ,
- .Serum Iron-Increased & Iron binding Capacity-decreased, Option ID :- 82, **Answer Serum Iron-decreased & Iron binding Capacity-Increased**

Question ID:- 22

Match List I with List II. Match Carcinogenic factors with Histologic types.

List I	List II
A. Solar Radiation	I. Retinoblastoma
B. Hereditary	II. Bladder Cancer
C. Human Papilloma Virus	III. Basal cell Carcinoma
D. Benzidine	IV. Carcinoma Cervix

Choose the correct answer from the options given

below:- Options:-

.A - I, B - IV, C - III, D - II ,

.A - III, B - I, C - IV, D - II ,

.A - IV, B - II, C - I, D - III ,

.A - IV, B - III, C - II, D - I , **Answer A-III,B-I,C-IV,D-II**

Question ID:- 23

Commonest benign tumor of placenta is:- Options:-

.Adenoma, Option ID :- 89 ,

.Chorioangioma, Option ID :- 91 ,

.Hamartoma, Option ID :- 92 ,

.Papilloma, Option ID :- 90, **Answer Chorioangioma**

Question ID:- 24

Given below are two statements.

Statement I : Chemical mediators of inflammation are derived from cells or plasma proteins.

Statement II : Leukotrienes LT C₄, LT D₄, LT E₄ & Thromboxane A₂ cause vasodilatation.

In the light of the above statements, choose the most appropriate answer from the options given below:-

Options:-

.Both Statement I and Statement II are correct, Option ID :- 93 ,

.Both Statement I and Statement II are incorrect, Option ID :- 94 ,

.Statement I is correct but Statement II is incorrect, Option ID :- 95 ,

.Statement I is incorrect but Statement II is correct, Option ID :- 96, **Answer Statement I is correct but Statement II is incorrect**

Question ID:- 25

Apoptosis in isolated cell is:- Options:-

.Activation, Option ID :- 98 ,

.Death, Option ID :- 99 ,

.Degeneration, Option ID :- 97 ,

.Regeneration, Option ID :- 100, **Answer Death**

Question ID:- 26

The dye used for production of Green tattoo is:- Options:-

.Chromic acid, Option ID :- 101 ,

.Cobalt, Option ID :- 104 ,

.Indian ink, Option ID :- 102 ,

.Vermilion, Option ID :- 103, **Answer Chromic acid**

Question ID:- 27

Given below are two statements.

Statement I : Adipocere is most commonly seen in bodies immersed in water or in a damp warm environment.

Statement II : In adipocere, hydrogenation and hydrolysis of fats into higher fatty acids occur.

In the light of above statements, choose the correct answer from the options below:- Options:-

.Both statement I and statement II are true, Option ID :- 105 ,

.Both statements I and statement II are false, Option ID :- 106 ,

.Statement I is correct but statement II is false, Option ID :- 107 ,

.Statement I is incorrect but statement II is true, Option ID :- 108,

Answer Both statement I and statement II are true

Question ID:- 28

List I	List II
(Poisoning)	(Post-mortem staining)
A. Carbon monoxide	I. Bluish green
B. Phosphorus	II. Chocolate
C. Hydrogen sulphide	III. Cherry red
D. Nitrites	IV. Dark brown

Match list I with list II. Choose the correct answer from the options given below:- Options:-

.A - III, B - II, C - I, D - IV , Option ID :- 109 ,

.A - III, B - II, C - IV, D - I , Option ID :- 111 ,

.A - III, B - IV, C - I, D - II , Option ID :- 112 ,

.A - III, B - IV, C - II, D - I , Option ID :- 110, **Answer A-III,B-IV,C-I,D-II**

Question ID:- 29

Given below are two statements: one is labeled as Assertion A and the other is labeled as Reason R.

Assertion A : Viscera should not be preserved in formaldehyde. Reason R: Extraction of nonvolatile organic poisons become difficult.

In the light of above statements choose the correct answer from the options given below:-

Options:-

.A is false but R is true, Option ID :- 116 ,

.A is true but R is false, Option ID :- 115 ,

.Both A and R are true and R is the correct explanation of A, Option ID :- 113 ,

.Both A and R are true but R is not the correct explanation of A, Option ID :- 114,

Answer Both A and R are true and R is the correct explanation of A

Question ID:- 30

"Quickening" is felt by a primigravida by about:- Options:-

.18th week , Option ID :- 117 ,

.24th week , Option ID :- 118 ,

.28th week , Option ID :- 119 ,

.32nd week , Option **Answer 18th week**

Question ID:- 31

Arrange the series of movements in normal labour in correct order.

- A. Restitution
- B. External rotation
- C. Engagement
- D. Crowning
- E. Delivery of the head by extension

Choose the correct answer from the options given below:- Options:-

.A, C, E, D, B , Option ID :- 124 ,

.B, A, D, E, C , Option ID :- 122 ,

.C, D, E, A, B , Option ID :- 121 ,

.D, E, A, C, B , Option ID :- 123,

Answer C,D,E,A,B

Question ID:- 33

'Powder Burns' are pathognomonic of which one of the following condition? Options:-

.Chronic PID , Option ID :- 131 ,

.Pelvic endometriosis , Option ID :- 130 ,

.TB of genital tract , Option ID :- 129 ,

.Uterine fibroid , Option ID :- 132,

Answer Pelvic endometriosis

Question ID:- 34

High risk factors for placenta praevia are:-

- A. Primigravida
- B. Smoking
- C. Maternal age > 35 years
- D. Prior curettage
- E. African women

Choose the correct answer from the options given below:- Options:-

- .A, B, E Only, Option ID :- 133 ,
- .A, C, E Only, Option ID :- 134 ,
- .B, C, D Only, Option ID :- 136 ,
- .D, C, E Only, Option ID :- 135, **Answer B,C,D Only**

Question ID:- 35

List I	List II
A. Germ Cell Tumor	I. Krukenberg tumor
B. Surface epithelial tumor	II. Teratoma of the ovary
C. Sex cord cell tumor	III. Serous cystadenoma of the ovary
D. Secondary ovarian tumor	IV. Arrhenoblastoma

CI

Match List I with List II. Choose the

correct answer from the options given below:- Options:-

.A - II, B - III, C - IV, D - I , Option ID :- 138 ,

.A - II, B - IV, C - I, D - III , Option ID :- 140 ,

.A - IV, B - I, C - III, D - II , Option ID :- 139 ,

.A - IV, B - II, C - I, D - III , Option ID :- 137, **Answer A-II,B-III,C-IV,D-I**

Question ID:- 36

A 28 years old lady presents with second trimester miscarriage, commonest cause of the same may be:-

Options:-

.Autosomal trisomy, Option ID :- 144 ,

.Bicornuate uterus, Option ID :- 142 ,

.Luteal phase defect, Option ID :- 141 ,

.Monosomy X, Option ID :- 143, **Answer Bicornuate uterus**

Question ID:- 37

Given below are two statements.

Statement I : Triple test includes maternal serum Alpha fetoprotein, hCG and unconjugated estriol.

Statement II : It is done between 30-32 weeks of pregnancy.

In the light of the above statements, choose the Correct answer from the options given below:-

Options:-

.Both Statement I and Statement II are false , Option ID :- 146 ,

.Both Statement I and Statement II are true , Option ID :- 145 ,

.Statement I is correct but Statement II is false , Option ID :- 147 ,

.Statement I is incorrect

Answer Statement I is correct but Statement II is false

Question ID:- 38

The parameters for APGAR scoring are:-

- A. Heart rate
- B. Colour
- C. Temperature
- D. Muscle tone
- E. Reflex irritability

Choose the correct answer from the options given below:- Options:-

- .A, B, C, D Only, Option ID :- 149 ,
- .A, B, D, E Only, Option ID :- 151 ,
- .B, C, E Only, Option ID :- 152 ,
- .B, D, E Only, Option ID :- 150, **Answer A,B,D,E Only**

Question ID:- 39

In a lady suspected to be suffering from genital TB, the best time to do diagnostic Uterine curettage is:-

Options:-

- .Day 14-16 of menstrual cycle , Option ID :- 155 ,
- .Day 21-23 of menstrual cycle , Option ID :- 156 ,
- .Day 2-4 of menstrual cycle , Option ID :- 153 ,
- .Day 8-10 of menstrual cycle , Option ID :- 154, **Answer Day21-23 of menstrual cycle**

Question ID:- 40

Which renal stones are characteristically radiolucent? Options:-

- .Cystine stones, Option ID :- 160 ,
- .Oxalate stones, Option ID :- 158 ,
- .Phosphate stones, Option ID :- 159 ,
- .Uric acid stones, Option ID :- 157, **Answer Uric acid stones**

Question ID:- 41

Among the following, which organism invades intact corneal epithelium? Options:-

- .Corynebacterium diphtheriae , Option ID :- 163 ,
- .Pneumococcus , Option ID :- 164 ,
- .Staphylococcus , Option ID :- 162 ,
- .Streptococcus , Option ID :- 161,

AnswerCoryne bacterium diphtheriae

Question ID:- 42

Curling ulcer is:- Options:-

- .Acute peptic ulcer which develops after cerebral trauma , Option ID :- 166 ,
- .Acute peptic ulcer which develops after major burns , Option ID :- 165 ,
- .Acute peptic ulcer which develops after use of NSAID , Option ID :- 167 ,
- .Occurs due to Helicobacter pylori infection , Option ID :- 168,

Answer Acute peptic ulcer which develops after major burns

Question ID:- 43

Given below are two statements: one is labeled as Assertion A and the other is labeled as Reason R.

Assertion A : Pain due to ureteric calculus is referred to the antero-medial aspect of thigh.

Reason R : Common innervation of lower ureter and inner side of the upper part of thigh is through Genitofemoral nerve.

In the light of the above statements, choose the correct answer from the options given below:-

Options:-

- .A is false but R is true , Option ID :- 172 ,
- .A is true but R is false , Option ID :- 171 ,

.Both A and R are true and R is the correct explanation of A , Option ID :- 169 ,

.Both A and R are true but R is NOT the correct explanation of A
Answer Both A and R are true and R is the correct explanation of A

Question ID:- 44

A 30 year old male presented with painless swelling in the right groin region. On examination, the swelling exhibits impulse on coughing and reducibility. The swelling doesn't come out on coughing when the deep inguinal ring is occluded. The probable diagnosis is:-

Options:-

.Direct inguinal hernia , Option ID :- 173 ,

.Femoral hernia , Option ID :- 176 ,

.Indirect inguinal hernia , Option ID :- 174 ,

.Lumbar hernia , Option ID :- 175, **Answer Indirect inguinal hernia**

Question ID:- 45

Consider the following statements regarding Rinne Test.

- A. Positive in case of normal hearing
- B. Positive in Sensorineural hearing loss
- C. Negative in conductive hearing loss
- D. Negative in otosclerosis
- E. Positive in Perforation of tympanic membrane

Choose the correct answer from the options given below:- Options:-

.A, B, C, D ONLY , Option ID :- 177 ,

.A, B, D, E ONLY , Option ID :- 179 ,

.A, C, D, E ONLY , Option ID :- 180 ,

.B, C, D, E ONLY , Option ID :- 178, **Answer A,B,C,D ONLY**

Question ID:- 46

A 25 year old cyclist was struck in a road accident and is brought to the hospital. On examination his perineum and scrotum are swollen and bruised, there is streak of blood at the external meatus and he is unable to pass urine. The patient most likely has:-

Options:-

- .Femoral head fracture , Option ID :- 183 ,
- .Femoral neck fracture , Option ID :- 181 ,
- .Femoral shaft fracture , Option ID :- 182 ,
- .Pelvic fracture , Option ID :- 184, **Answer Pelvic fracture**

Question ID:- 47

A 40 year old lady presented with colicky abdominal pain in the right upper quadrant of abdomen, radiating backwards to right shoulder blade. She gives history of food intolerance to fat and flatulence. The most probable diagnosis is:-

Options:-

- .Biliary colic , Option ID :- 188 ,
- .Liver abscess , Option ID :- 187 ,
- .Pancreatitis , Option ID :- 186 ,
- .Right lower lobe pneumonia , Option ID :- 185, **Answer Biliary colic**

Question ID:- 48

Given below are two statements.

Statement I : Basal cell carcinoma arise from the basal layer of Rete Malpighii of the skin.

Statement II : Basal cell carcinoma spreads rapidly through lymphatics and blood vessels.

In the light of the above statements, choose the most appropriate answer from the options given below:-

Options:-

- .Both Statement I and Statement II are correct, Option ID :- 189 ,

.Both Statement I and Statement II are incorrect, Option ID :- 190 ,

.Statement I is correct but Statement II is incorrect, Option ID :- 191 ,

.Statement I is incorrect but Statement II is correct, Option ID :- 192, **Answer Statement I is correct but Statement II is incorrect**

Question ID:- 49

Given below are two statements: one is labeled as Assertion A and the other is labeled as Reason R.

Assertion A : Diarrhoea is a feature in 30% of patients with Medullary carcinoma of thyroid.

Reason R : In medullary carcinoma of thyroid, the tumour cells produce 5- Hydroxytryptamine or prostaglandin.

In the light of the above statements, choose the correct answer from the options given below:-

Options:-

.A is false but R is true, Option ID :- 196 ,

.A is true but R is false, Option ID :- 195 ,

.Both A and R are true and R is the correct explanation of A, Option ID :- 193 ,

.Both A and R are true but R is NOT the correct explanation of A, Option ID :- 194, **Answer Both A and R are true and R is the correct explanation of A**

Question ID:- 50

Given below are two statements.

Statement I : Retinoblastoma is the most common intraocular tumour of childhood. Statement II : Retinoblastoma gene has been identified as 14 band on the long arm of chromosome 10.

In the light of the above statements, choose the most appropriate answer from the options given below:-

Options:-

.Both Statement I and Statement II are correct, Option ID :- 197 ,

.Both Statement I and Statement II are incorrect, Option ID :- 198 ,

.Statement I is correct but Statement II is incorrect, Option ID :- 199 ,

.Statement I is incorrect but Statement II is correct, Option ID :- 200, **Answer .Statement I is correct but Statement II is incorrect**

Question ID:- 51

A 60 year old male with a history of myocardial infarction presented with sudden onset pain in the right leg. On examination, the leg is cold to touch, peripheral leg pulsations are absent and he can't raise his legs. The most probable diagnosis is:-

Options:-

.Arterial occlusion, Option ID :- 203 ,

.Deep vein thrombosis, Option ID :- 202 ,

.Sciatica, Option ID :- 204 ,

.Varicose Veins, Option ID :- 201, **Answer Arterial occlusion**

Question ID:- 52

Given below are two statements: one is labeled as Assertion A and the other is labeled as Reason R.

Assertion A : Verification of the diagnosis is the first step in an epidemic investigation. Reason R : The epidemiologic investigation should be delayed till the laboratory results are available.

In the light of the above statements, choose the most appropriate answer from the options given below:-

Options:-

.A is correct but R is not correct, Option ID :- 207 ,

.A is not correct but R is correct, Option ID :- 208 ,

.Both A and R are correct and R is the correct explanation of A, Option ID :- 205 ,

.Both A and R are correct but R is NOT the correct explanation of A, Option ID :- 206, **Answer A is correct but R is not correct**

Question ID:- 53

Home based Pregnancy test kits (PTKs) was labeled under NRHM by the name of:- Options:-

.CHHAYA, Option ID :- 211 ,

.NIKSHAY, Option ID :- 210 ,

.NIRBHAY, Option ID :- 209 ,

.NISCHAY, Option ID :- 212,

Answer NISCHAY

Question ID:- 54

List I	List II
A. SANDFLY	I. BUBONIC PLAGUE
B. FLEAS	II. RELAPSING FEVER
C. HARD TICK	III. ORIENTAL SORE
D. SOFT TICK	IV. ROCKY MOUNTAIN SPOTTED FEVER

Match List I with List II. Choose the

correct answer from the options given below:- Options:-

. Options:-

.A - I, B - III, C - IV, D - II , Option ID :- 214 ,. Answer

.A - II, B - I, C - IV, D - III , Option ID :- 213 ,

.A - III, B - I, C - II, D - IV , Option ID :- 216 ,

.A - III, B - I, C - IV, D - II , Option ID :- 215,

Question ID:- 55

Consider the following statements: Statement I : In standard normal curve, the total area of curve is 100.

Statement II : In standard normal curve, the mean, median and mode all coincide.

In the light of the above statements, choose the most appropriate answer from the options given below:-

Options:-

.Both Statement I and Statement II are correct , Option ID :- 217 ,

.Both Statement I and Statement II are incorrect , Option ID :- 218 ,

.Statement I is correct but Statement II is incorrect , Option ID :- 219 ,

.Statement I is incorrect but Statement II is correct , Option ID :- 220, **Answer Statement I is incorrect but Statement II is correct**

Question ID:- 56

Consider the following statements.

- A. Epstein Barr virus is associated with Burkitt's Lymphoma
- B. Epstein Barr virus is associated with Nasopharyngeal carcinoma
- C. Mongols are more likely to develop Leukemia than normal children.
- D. Thermography is more sensitive technique of Breast cancer screening than Mammography

Choose the correct answer from the options given below:- Options:-

.A, B & C only, Option ID :- 223 ,

.A, B & D only, Option ID :- 222 ,

.A, C & D only, Option ID :- 224 ,

.B, C & D only, Option ID :- 221, **Answer A,B&C only**

Question ID:- 57

Which among the following vaccine is least sensitive to heat? Options:-

- .Hepatitis B, Option ID :- 227 ,
- .Inactivated polio vaccine (IPV), Option ID :- 228 ,
- .Influenza, Option ID :- 226 ,
- .Oral polio vaccine, Option ID :- 225, **Answer Hepatitis B**

Question ID:- 58

Wilson's disease can be described as:- Options:-

- .Autosomal dominant , Option ID :- 230 ,
- .Autosomal recessive , Option ID :- 229 ,
- .Trisomy of 18th chromosome , Option ID :- 232 ,
- .X - linked , Option ID :- 231, **Answer Autosomal recessive**

Question ID:- 59

The mode of transmission of causative agent of typhoid fever is:- Options:-

- .Air borne, Option ID :- 233 ,
- .Blood borne, Option ID :- 234 ,
- .Droplet, Option ID :- 236 ,
- .Fecal-oral route, Option ID :- 235, **Answer Fecal-oral route**

Question ID:- 60

List I	List II
A. Niacin	I. Beri-beri
B. Thiamine	II. Pernicious anemia
C. Ascorbic acid	III . Pellagra
D. Vitamin B12	IV. Scurvy

Match List I with List II. Choose the correct answer from the options given below:-

Options:-

.A - I, B - II, C - III, D - IV , Option ID :- 237 ,

.A - II, B - III, C - I, D - IV , Option ID :- 240 ,

.A - III, B - I, C - IV, D - II , Option ID :- 238 ,

.A - IV, B - II, C - I, D - III , Option ID :- 239, **Answer A-III,B-I,C-IV,D-II**

Question ID:- 61

A 12 lead electrocardiogram showed normal atrio-ventricular ratio and abnormally long P-R interval. The most likely diagnosis is:-

Options:-

.First- degree AV Block , Option ID :- 241 ,

www.homoeoadda.in

.Second-degree AV Block (Type I) , Option ID :- 242 ,

.Second-degree AV Block (Type II) , Option ID :- 243 ,

.Third-degree AV Block , Option ID :- 244, **Answer First-degree AV Block**

Question ID:- 62

The most likely cause of isolated unconjugated hyperbilirubinemia in the absence of hemolysis in an otherwise healthy patient is:-

Options:-

- .Crigler – Najjar syndrome type II, Option ID :- 247 ,
- .Crigler – Najjar syndrome type I, Option ID :- 246 ,
- .Dubin – Johnson syndrome, Option ID :- 248 ,
- .Gilbert’s syndrome, Option ID :- 245, **Answer Gilbert’s syndrome**

Question ID:- 63

Dyspnea accompanied by cough with production of thick brownish plugs of mucus is typically found in:-

Options:-

- .Allergic Bronchopulmonary Aspergillosis , Option ID :- 252 ,
- .Bronchial Asthma , Option ID :- 250 ,
- .Chronic Bronchitis , Option ID :- 249 ,
- .Pneumococcal Pneumonia , Option ID :- 251, **Answer Allergic Broncho pulmonary Aspergillosis**

Question ID:- 64

A 65 years old male with history of exertional dyspnea and chest pain developed syncope while walking. Examination revealed a slow rising, low volume carotid pulse and an ejection mid-systolic murmur. The most likely diagnosis is:-

Options:-

- .Aortic regurgitation, Option ID :- 256 ,
- .Aortic stenosis, Option ID :- 255 ,
- .Mitral regurgitation, Option ID :- 254 ,
- .Mitral stenosis, Option ID :- 253, **Answer Aorticstenosis**

Question ID:- 65

Which of the following statements are true for Chronic Obstructive Pulmonary disease?

- A. Changes in large airways cause cough and sputum.
- B. Mucus gland enlargement and goblet cell hyperplasia cause airflow limitation.
- C. Major site of increased resistance is in airways $\leq 2\text{mm}$ diameter.
- D. Centriacinar emphysema is frequently associated with cigarette smoking.

Choose the correct answer from the options below:- Options:-

.A, B, C only, Option ID :- 260 ,

.A, B, D only, Option ID :- 258 ,

.A, C, D only, Option ID :- 257 ,

.B, C, D only, Option ID :- 259, **Answer A,C,D only**

Question ID:- 66

In Chronic Hepatitis B, the serological marker which correlates with level of liver injury and risk of disease progression is:-

Options:-

.HBcAg, Option ID :- 263 ,

.HBeAg, Option ID :- 261 ,

.HbsAg, Option ID :- 264 ,

.HBV DNA, Option ID :- 262,

Answer HBV DNA

Question ID:- 67

Stroke manifesting with pure sensory symptoms results from infarction of:- Options:-

.Genu of internal capsule, Option ID :- 268 ,

.Posterior limb of internal capsule, Option ID :- 265 ,

.Ventral pons, Option ID :- 267 ,

.Ventral posterolateral nucleus of thalamus, Option ID :- 266, **Answer Ventral postero lateral nucleus of thalamus**

Question ID:- 68

Thought broadcasting is known to be an important feature of:- Options:-

- .Alcoholism, Option ID :- 270 ,
- .Alzheimer's disease, Option ID :- 271 ,
- .Anxiety disorder, Option ID :- 269 ,
- .Schizophrenia, Option ID :- 272, **Answer Schizophrenia**

Question ID:- 69

A middle aged female presented with intermittent pain and swelling in finger joints and photosensitive rash on face. Detection of which autoantibody is most important for diagnosis in above case:-

Options:-

- .Anti-c1q antibodies, Option ID :- 276 ,
- .Anti-nuclear antibodies, Option ID :- 275 ,
- .Anti-Ro antibodies, Option ID :- 274 ,
- .Anti-Sm antibodies, Option ID :- 273, **Answer Anti-nuclear antibodies**

Question ID:- 70

Which of the following statements regarding Bronchial asthma are correct?

- A. Peak incidence of asthma is in childhood.
- B. Lower levels of infection in early childhood increases the risk for asthma.
- C. Allergic reaction to food leads to increased asthma symptoms
- D. Exercise is a common trigger of asthma in children.
- E. The most common allergen to trigger asthma are pollens.

Choose the correct answer from the options given below:- Options:-

- .A, B & C only , Option ID :- 278 ,
- .A, B & D only , Option ID :- 277 ,

.B, C & D only , Option ID :- 279 ,

.B, C & E only , Option ID :- 280, **Answer A,B&D only**

Question ID:- 71

The most widely used test for diagnosis of stable angina pectoris is:- Options:-

.12-lead ECG at rest , Option ID :- 281 ,

.Chest X-ray , Option ID :- 283 ,

.Coronary Arteriography , Option ID :- 284 ,

.Exercise ECG , Option ID :- 282, **Answer Exercise ECG**

Question ID:- 72

The CSF analysis of patient revealed WBC count more than 1000 per microliter. The most likely cause is:-

Options:-

.Bacterial meningitis, Option ID :- 287 ,

.Fungal meningitis, Option ID :- 286 ,

.Tuberculous meningitis, Option ID :- 288 ,

.Viral meningitis, Option ID :- 285, **Answer Bacterial meningitis**

Question ID:- 73

A middle aged female presented with persistent productive cough with production of thick, tenacious sputum. Examination revealed wheezing on lung auscultation and clubbing of fingers. Her chest x-ray shows ‘tram tracks’ sign. The most likely diagnosis is:-

Options:-

.Bronchial asthma , Option ID :- 291 ,

.Bronchiectasis , Option ID :- 290 ,

.Chronic bronchitis , Option ID :- 289 ,

.Hypersensitivity Pneumonitis , Option ID :- 292, **Answer Bronchiectasis**

Question ID:- 74

Acute cerebral or Basilar Meningitis, with threatened effusion, nocturnal hallucination; wakes from sleep frightened, screaming; when Apis, Helleborus or Sulphur, though well selected, fail to improve, is a symptom of:-

Options:-

- .Kali Brom , Option ID :- 295 ,
- .Natrum Sulph , Option ID :- 294 ,
- .Tuberculinum , Option ID :- 293 ,
- .Zincum Met , Option ID :- 296, **Answer Tuberculinum**

Question ID:- 75

A man aged 40 years came to OPD complaining of headache, vertigo with a sense of stupefaction because of which he was unable to think or perform any mental labour and the headache was apt to be worse on exposure to the sun rays or under gas light.

The patient was greatly depressed in spirits; wholly occupied with sad thoughts. Suggest the remedy from following option:-

Options:-

- .Glonoine , Option ID :- 298 ,
- .Lac can. , Option ID :- 300 ,
- .Mag. carb. , Option ID :- 297 ,
- .Natrum carb. , Option ID :- 299, **Answer Natrum carb.**

Question ID:- 76

Children pale, rachitic, dwarfed and stunted in growth; mentally dull and weak is found in:-

Options:-

- .Medorrhinum , Option ID :- 302 ,
- .Psorinum , Option ID :- 304 ,
- .Syphilinum , Option ID :- 303 ,
- .Tuberculinum , Option ID :- 301, **Answer Medorrhinum**

Question ID:- 77

According to J.T. Kent, the antidote for the poisonous effects of the sting of the honey bee, in persons who are sensitive to it, is:-

Options:-

- .Apis mel , Option ID :- 307 ,
- .Argentum met , Option ID :- 305 ,
- .Carbolic acid , Option ID :- 306 ,
- .Ledum pal , Option ID :- 308, **Answer Carbolic acid**

Question ID:- 78

Which of the following is the vegetable analogue of Magnesia Phos.? Options:-

- .Chamomilla, Option ID :- 309 ,
- .Colocynth, Option ID :- 310 ,
- .Conium mac., Option ID :- 311 ,
- .Ferrum met., Option ID :- 312, **Answer Chamomilla**

Question ID:- 79

Given below are two statements : one is labelled as Assertion A and the other is labelled as Reason R.

Assertion A : Spigelia is a good remedy for symptoms due to the presence of worms. Reason R : Neuralgia of fifth nerve is very prominent in its effects.

In the light of the above statements, choose the correct answer from the options given below:-

Options:-

- .A is false but R is true, Option ID :- 316 ,
- .A is true but R is false, Option ID :- 315 ,
- .Both A and R are true and R is the correct explanation of A, Option ID :- 313 ,
- .Both A and R are true but R is NOT the correct explanation of A, Option ID :- 314, **Answer Both A and R are true but R is NOT the correct explanation of A**

Question ID:- 80

List I	List II
A. PODOPHYLLUM	I. LINEAE
B. LEDUM PAL	II. BORRAGINACEAE
C. COCA	III. BERBERIDACEAE
D. SYMPHYTUM	IV. ERICACEAE

Match List I with List II. Choose the correct answer from the options given below:- Options:-

- .A - I, B - II, C - III, D - IV , Option ID :- 320 ,
- .A - II, B - III, C - I, D - IV , Option ID :- 317 ,
- .A - III, B - I, C - IV, D - II , Option ID :- 319 ,
- .A - III, B - IV, C - I, D - II , Option ID :- 318, **Answer A-III,B-IV,C-I,D-II**

Question ID:- 81

Vomiting in any position except lying on right side, followed by drowsiness and prostration is a symptom of:-

Options:-

- .Antim tart, Option ID :- 323 ,
- .Ars.alb, Option ID :- 322 ,
- .Colchicum, Option ID :- 324 ,
- .Ipecac, Option ID :- 321, **Answer Antim tart**

Question ID:- 82

Headache begins in the occiput and extends over head. Headache of schoolgirls < 10- 11am or 4 to 5 pm. The indicated remedy is:-

Options:-

- .Calcarea phos , Option ID :- 326 ,
- .Magnesia phos , Option ID :- 325 ,
- .Natrum mur , Option ID :- 327 ,
- .Sanicula , Option ID :- 328, **Answer Magnesia phos**

Question ID:- 83

Loose cough with badly smelling sputa; the breath and sputa smell badly to the patient himself is characteristic feature of:-

Options:-

- .Causticum, Option ID :- 331 ,
- .Kreosotum, Option ID :- 329 ,
- .Psorinum, Option ID :- 332 ,
- .Sanguinaria canadensis, Option ID :- 330, **Answer Sanguinaria canadensis**

Question ID:- 84

Match List I with List II.

Choose

the correct answer from the options given below:- Options:-

Match List I with List II.	
List I	List II
A. Rheumatic troubles which are < in fall or spring, when the air is full of melting snow.	I. Coffea
B. Affections from sudden surprises, especially joyful surprises; very emotional	II. Aurum Met
C. Dyspnoea ; < sitting, after sleep, in room, > dancing or walking rapidly	III. Calcarea Phc
D. Abuse of Mercury, in syphilis, in massive doses	IV. Sepia

.A - II, B - III, C - I, D - IV , Option ID :- 333 ,

.A - III, B - I, C - IV, D - II , Option ID :- 336 ,

.A - III, B - II, C - IV, D - I , Option ID :- 334 ,

.A - III, B - IV, C - I, D - II , Option ID :- 335, **Answer A-III,B-I,C-IV,D-II**

Question ID:- 85

This remedy is a cardiac stimulant affecting the peripheral vessels and coronary arteries:-

Options:-

.Aurum met, Option ID :- 337 ,

.Lachesis, Option ID :- 340 ,

.Phosphorus, Option ID :- 339 ,

.Squilla, Option ID :- 338, **Answer Squilla**

Question ID:- 86

Crops of small boils, intensely painful, successively appear in the nose; green foetid pus is the symptom of:-

Options:-

.ARNICA MONTANA, Option ID :- 341 ,

.BELLADONNA, Option ID :- 343 ,

.HEPAR SULPH, Option ID :- 344 ,

.TUBERCULINUM, Option ID :- 342, **Answer TUBERCULINUM**

Question ID:- 87

“Painless haematuria; blood thoroughly mixed with urine; sediment, like coffee grounds; cloudy, smoky, albuminous; profuse, dark or black” is the symptom of:- Options:-

.APIS MEL, Option ID :- 346 ,

.CANTHARIS, Option ID :- 347 ,

.COLCHICUM, Option ID :- 345 ,

.TEREBINTH, Option ID :- 348,

Answer TEREBINTH,

Question ID:- 88

According to "Lectures on Materia Medica" by J. T.Kent on Aconitum nap.

- A. Aconite is a short acting remedy
- B. Aconite is suited to the complaints that come on suddenly from the very cold weather of winter, or from the intensely hot weather of summer.
- C. Aconite belongs to RUBIACEAE family
- D. Aconite is one of the best remedies for retention of urine in the newborn.
- E. In Aconite everything tastes bitter, except water.

www.homoeoadda.in

Choose the correct answer from the options given below:- Options:-

- .A, B, C, D only, Option ID :- 350 ,
- .A, B, D, E only, Option ID :- 351 ,
- .A, C, D, E only, Option ID :- 349 ,
- .B, C, D, E only, Option ID :- 352, **Answer A,B,D,E only**

Question ID:- 89

List I	List II
A. POKEROOT	I. COLLINSONIA
B. STONE ROOT	II. SPIGELIA
C. BLOODROOT	III. PHYTOLACCA
D. PINKROOT	IV. SANGUINARIA

Match List I with List II. Choose the

correct answer from the options given below:- Options:-

.A - I, B - III, C - II, D - IV , Option ID :- 353 ,

.A - III, B - I, C - II, D - IV , Option ID :- 355 ,

.A - III, B - I, C - IV, D - II , Option ID :- 354 ,

.A - III, B - II, C - IV, D - I , Option ID :- 356, **Answer A-III,B-I,C-IV,D-II**

Question ID:- 90

The apparent symptoms caused by excess of appropriate homoeopathic remedy, during the administration of Fifty millesimal scale of potencies, are known as:- Options:-

.Alternating symptoms , Option ID :- 360 ,

.Keynotes , Option ID :- 358 ,

.Pathological Generals , Option ID :- 357 ,

.Schein Symptome , Option ID :- 359, **Answer Schein Symptome**

Question ID:- 91

According to Hahnemann, 'so called Local maladies' belong to class of:- Options:-

.Animal magnetism, Option ID :- 362 ,

.External one-sided diseases, Option ID :- 364 ,

.Indisposition, Option ID :- 361 ,

.Internal one-sided diseases, Option ID :- 363, **Answer External one-sided diseases**

Question ID:- 92

A patient suffering from acute viral rhinitis responds to indicated homoeopathic remedy with no aggravation whatever. This corresponds to which of the following Kent's observation:-

Options:-

.First, Option ID :- 365 ,

.Fourth, Option ID :- 366 ,

.Ninth, Option ID :- 367 ,

.Tenth, Option ID :- 368, **Answer Fourth**

Question ID:- 93

Administration of analgesic in a patient suffering from pain in abdomen with vomiting, vertigo and dyspnea is an example of:-

Options:-

.Mesmerism, Option ID :- 371 ,

.Psychical remedy, Option ID :- 372 ,

.Symptomatic treatment, Option ID :- 369 ,

.Totality of symptom, Option ID :- 370, **Answer Symptomatic treatment,**

Question ID:- 94

A child complains of colicky pain in abdomen better by lying on abdomen, with sour smelling stool. He wants constant attention and must be rocked or carried. The predominant miasm is:-

Options:-

.Psora, Option ID :- 373 ,

.Sycosis, Option ID :- 374 ,

.Syphilis, Option ID :- 375 ,

.Tubercular, Option ID :- 376, **Answer Sycosis**

Question ID:- 95

Vis medicatrix refers to:- Options:-

.Acute individual disease, Option ID :- 378 ,

.Homoeopathic aggravation, Option ID :- 379 ,

.Inappropriately named chronic disease, Option ID :- 377 ,

.Nature's self-help in diseases, Option ID :- 380, **Answer Nature's self-help in diseases**

Question ID:- 96

Which of the following is feature of Second edition of Organon of Medicine? Options:-

- .Contained 291 aphorisms, Option ID :- 382 ,
- .Latin words 'Aude sapere' were introduced, Option ID :- 384 ,
- .Published in 1810, Option ID :- 381 ,
- .Was translated in English by William Boericke, Option ID :- 383, **Answer Latin words 'Aude sapere' were introduced,**

www.homoeoadda.in

Question ID:- 97

Given below are two statements: one is labelled as Assertion A and the other is labelled as Reason R.

Assertion A : The best provings of pure effects of simple medicines are those which healthy, unprejudiced and sensitive physician institutes on himself with all caution. Reason R : Stimulating drinks, spices and herb soups should be given regularly to prover during drug proving.

In the light of the above statements, choose the most appropriate answer from the options given below:-

Options:-

- .A is correct but R is not correct, Option ID :- 387 ,
- .A is not correct but R is correct, Option ID :- 388 ,
- .Both A and R are correct and R is the correct explanation of A, Option ID :- 385 ,
- .Both A and R are correct but R is NOT the correct explanation of A, Option ID :- 386, **Answer A is correct but R is not correct,**

Question ID:- 98

Given below are two statements: one is labelled as Assertion A and the other is labelled as Reason R.

Assertion A : Hahnemann administered small dose of Aconite as Genus epidemicus in epidemic of smooth scarlatina in Konigsutter in 1801.

Reason R : Hahnemann has given directions for investigating the totality of symptoms of Epidemic diseases in Organon of Medicine.

In the light of the above statements, choose the correct answer from the options given below:-

Options:-

.A is false but R is true, Option ID :- 392 ,

.A is true but R is false, Option ID :- 391 ,

.Both A and R are true and R is the correct explanation of A, Option ID :- 389 ,

.Both A and R are true but R is NOT the correct explanation of A, Option ID :- 390, **Answer A is false but R is true,**

Question ID:- 99

Given below are two statements.

Statement I : The symptoms appearing during apyretic interval of Intermittent fever must be chief guide for the selection of most appropriate homoeopathic remedy.

Statement II : A patient suffering from intermittent fever should be administered appropriate homoeopathic remedy in the beginning of paroxysm.

In the light of the above statements, choose the most appropriate answer from the options given below:-

Options:-

.Both Statement I and Statement II are correct, Option ID :- 393 ,

.Both Statement I and Statement II are incorrect, Option ID :- 394 ,

.Statement I is correct but Statement II is incorrect, Option ID :- 395 ,

.Statement I is incorrect but Statement II is correct, Option ID :- 396, **Answer Statement I is correct but Statement II is incorrect,**

Question ID:- 100

Given below are two statements.

Statement I : Alternating action of medicine is the alternating state of various paroxysms of its Primary action.

Statement II : Homoeopathic cure takes place during alternating action of medicine.

In the light of the above statements, choose the most appropriate answer from the options given below:-

Options:-

.Both Statement I and Statement II are false, Option ID :- 398 ,

.Both Statement I and Statement II are true, Option ID :- 397 ,

.Statement I is correct but Statement II is false, Option ID :- 399 ,

.Statement I is incorrect but Statement II is true, Option ID :- 400, **Answer Statement I is correct but Statement II is false,**

WWW.HOMOEOADDA.IN
7455964281
WWW.HOMOEOADDA.COM



Starting
5
September



HOMOEADDA

Education | Health | Pharmacy

AIAPGET Online Test Series 2021

HOMOEOPATHY

Phase 1
Topicwise
22 Mock Test

Phase 2
Subjectwise
23 Mock Test

Phase 3
Complete Syllabus
50 Mock Test
5 Live
Special Mock Test

New Concept
Adding Daily Assignment Test
Via Whatsapp / telegram
For Individual assessment
*Topic Given & next day
personal test for each individual

Total 100 Mock till AIAPGET 2021

18E-textBook ,27000+ keypoints Based

EVERY WEEK TWO TEST PAPER TILL AIAPGET2021

Attempt Any Time ReAttempt option Review Unlimited Time

ALL PAPERS COMPILED ACCORDING TO NEW PATTERN COVERING ALL SUBJECTS(CONCEPT BASED MCQ, HIGH PRIORITY MCQ)

Mock Never Removed from Dashboard*

STUDY MATERIAL WITH QUICK REVIEW POINTERS OF ALL SUBJECTS WITH FAQ'S

INSTANT SUBMISSION WITH ANSWERKEY ,COMPLETE EXPLANATION OF EACH QUESTION

TOTAL SCORE,NEGATIVE MARKING ,TIME BOUNDATION WITH MICRO LEVEL PERFORMANCE ANALYSIS

REAL EXAM HALL ENVIROMENT ,IN DEPTH ANALYSIS OF STRONG & WEAK POINTS

Smart Tables ,Tips ,Charts , Graphics Mnemonics for Quick Memorizing Learning

SPECIAL REVIEW SECTION WHERE ALL SUBMITTED PAPER GET SAVED FOR FUTURE LEARNING

RANKING AMONG ALL USER,S ACROSS INDIA WITH 24 X 7 ONLINE /ONCALL ASSISTANCE

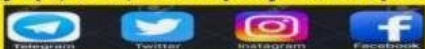
FOR JOINING - REGISTRATION OPEN

FOR QUERY CALL OR WHATSAPP

VISIT - **WWW.HOMOEOADDA.IN**

7455964281

For daily tips, MCQ, Homoeopathy current updates and news join our Telegram group and follow us at



/HOMOEOADDA

Question ID:- 101

Consider the following statements regarding Magnets and Mesmerism.

- A. Hahnemann never recommended power of magnet for healing purposes.
- B. According to Hahnemann, too violent action of magnets can be antidoted by application of plate of polished zinc.
- C. Mesmerism is performed by massaging hands and feet of the patient
- D. Negative mesmerism can be used to rouse patient from somnambulic sleep

Choose the correct answer from the options given below:- Options:-

- .A & C Only, Option ID :- 401 ,
- .A & D Only, Option ID :- 404 ,
- .B & C only, Option ID :- 402 ,
- .B & D Only, Option ID :- 403, **Answer B & D Only,**

Question ID:- 102

List I	List II
A. Brousseau	I. Inductive logic
B. Lord Bacon	II. Doctrine of Analogy
C. C. Hering	III. Blood letting
D. Boenninghausen	IV. First homoeopathic educational institution

Match List I with List II. Choose the

correct answer from the options given below:- Options:-

.A - III, B - I, C - IV, D - II , Option ID :- 406 ,

.A - III, B - IV, C - II, D - I , Option ID :- 407 ,

.A - IV, B - I, C - III, D - II , Option ID :- 408 ,

.A - IV, B - III, C - I, D - II , Option ID :- 405, **Answer A - III, B - I, C - IV, D - II ,**

Question ID:- 103

In which of the following aphorism, Hahnemann mentioned about the indiscriminate use of high potencies that bring about dangerous consequences?

Options:-

.Aph. 275 , Option ID :- 409 ,

.Aph. 276 , Option ID :- 410 ,

.Aph. 277 , Option ID :- 411 ,

.Aph. 278 , Option ID :- 412, **Answer Aph. 276**

Question ID:- 104

In case of proving of narcotic substances, the symptoms are observed during which action of medicine?

Options:-

.Alternating, Option ID :- 416 ,

.Concordance, Option ID :- 415 ,

.Primary, Option ID :- 413 ,

.Secondary, Option ID :- 414, **Answer Secondary,**

Question ID:- 105

Given below are two statements.

Statement I : Hahnemann's masterly work "Chronic Disease : Their peculiar nature & Their homoeopathic cure" describes the nature & cause of Chronic diseases along with their homoeopathic treatment.

Statement II : In the chronic diseases, Hahnemann stresses upon the use of antimiasmatic remedies & the maxim "cessante causa, cessant effectus".

In the light of the above statements, choose the most appropriate answer from the options given below:-

Options:-

- .Both Statement I and Statement II are correct , Option ID :- 417 ,
- .Both Statement I and Statement II are incorrect , Option ID :- 418 ,
- .Statement I is correct but Statement II is incorrect , Option ID :- 419 ,
- .Statement I is incorrect but Statement II is correct , Option ID :- 420, **Answer Both Statement I and Statement II are correct**

Question ID:- 106

In which chapter of the Boenninghausen's Therapeutic Pocket Book, "Insanity" is mentioned?

Options:-

- .Aggravation, Option ID :- 424 ,
- .Intellect, Option ID :- 422 ,
- .Mind, Option ID :- 421 ,
- .Sensation, Option ID :- 423, **Answer Intellect,**

Question ID:- 107

"Pyromania" is mentioned in which repertory:- Options:-

- .Boericke repertory, Option ID :- 428 ,
- .Boger Boenninghausen Characteristics & repertory, Option ID :- 426 ,
- .Kent's repertory, Option ID :- 425 ,
- .Therapeutic pocket Book, Option ID :- 427,

Answer **Boger Boenninghausen Characteristics & repertory,**

Question ID:- 108

Which of the following cross reference is given for the rubric “Absent minded” in Kent’s repertory?

Options:-

.Abstraction of mind , Option ID :- 432 ,

.Answers slowly , Option ID :- 431 ,

.Forgetful , Option ID :- 430 ,

.Memory weakness of , Option ID :- 429, **Answer Forgetful ,**

Question ID:- 109

First English repertory was published in Allentown by:- Options:-

.A. Lippe, Option ID :- 433 ,

.C. Hering, Option ID :- 436 ,

.C.Lippe, Option ID :- 434 ,

.T F Allen, Option ID :- 435, **Answer GC. Hering,**

Question ID:- 110

Given below are two statements: one is labeled as Assertion A and the other is labeled as Reason R.

Assertion A : Different kinds of sensations or pain, if noticed at many parts, can be taken as “General”.

Reason R : All the rubrics mentioned in “Sensations & Complaints in General” in BBCR are not "Pathological General".

In the light of above statements choose the most appropriate answer from the options given below:-

Options:-

.A is correct but R is not correct , Option ID :- 439 ,

.A is not correct but R is correct , Option ID :- 440 ,

.Both A and R are correct and R is the correct explanation of A , Option ID :- 437 ,

.Both A and R are correct but R is not the correct explanation of A , Option ID :- 438,

Answer Both A and R are correct but R is not the correct explanation of A ,

Time To Boost
Your Preparation

**AIAPGET
2021**



**WHY HOMOEODDA ONLINE TEST SERIES
,YOU NEED TO JOIN?**

- All Pattern Based MCQ
- Topicwise , Subjectwise, Complete Syllabus
- 100 Mock Test, Analytics, High Yield
- Complete Detailed Explanation, Each MCQ
- High Yeilding Etextbook
- ReAttempt Option ,AIR

Register now at
www.homoeoadda.in
7455964281

**& NOW ADDING DAILY TOPIC
BASED PRACTICE ASSIGNMENT
FEATURE FOR MORE SMART
LEARNING**

Sp Adobe Spark

Question ID:- 111

Given below are two statements.

Statement I : 'Awkwardness' is mentioned in 'Extremities' section of Kent's Repertory. Statement II : 'Awkwardness' is mentioned in 'Mind' section of BCCR.

In the light of above statements choose the most appropriate answer from the options given below:-

Options:-

- .Both statement I and statement II are correct, Option ID :- 441 ,
- .Both statement I and statement II are incorrect, Option ID :- 442 ,
- .Statement I is correct but statement II is incorrect, Option ID :- 443 ,
- .Statement I is incorrect but statement II is correct, Option ID :- 444, **Answer Both statement I and statement II are correct,**

Question ID:- 112

'Sucking the thumb' is mentioned in which chapter of Boger Boenninghausen's Characteristics and Repertory?

Options:-

- .Mind , Option ID :- 448 ,
- .Mouth , Option ID :- 445 ,
- .Sensorium , Option ID :- 446 ,
- .Upper Extremities , Option ID :- 447, **Answer Upper Extremities**

Question ID:- 113

The only remedy mentioned in Boenninghausen's Therapeutic Pocket Book for Aggravation from Lemonade is:-

Options:-

- .Antim crud, Option ID :- 452 ,
- .Belladonna, Option ID :- 449 ,
- .Hepar sulph., Option ID :- 450 ,
- .Selenium, Option ID :- 451, **Answer Selenium**

Question ID:- 114

How many gradation of medicine is given in 'The Homoeopathic Therapeutics of Diarrhoea' by James Bell?

Options:-

.Four , Option ID :- 456 ,

.One , Option ID :- 453 ,

.Three , Option ID :- 455 ,

.Two , Option ID :- 454, **Answer Four**

Question ID:- 115

How will you arrange the rubric for Sciatica pain which is aggravated in the morning according to Kent's repertory?

- A. Sciatica
- B. Extremities
- C. Lower limbs
- D. Pain
- E. Morning

Choose the correct answer from the options given below:- Options:-

.B-C-D-A-E , Option ID :- 458 ,

.B-C-D-E-A , Option ID :- 459 ,

.B-D-C-A-E , Option ID :- 460 ,

.C-B-D-A-E , Option ID :- 457,

Answer B-D-C-A-E

Question ID:- 116

Match List I (Rubric) with List II (Chapter) from Kent's Repertory.

List I	List II
A. Aura Epileptica	I. Abdomen
B. Diarrhea, sensation as if would come on	II. Extremities
C. Diarrhea in children	III. Stomach
D. Abducted, lies with limb	IV. Rectum

Choose the correct answer from the options given below:- Options:-

.A - I, B - III, C - IV, D - II , Option ID :- 462 ,

.A - II , B - I, C - IV, D - III , Option ID :- 464 ,

.A - III, B - I, C - IV, D - II , Option ID :- 461 ,

.A - III, B - II, C - I, D - IV , Option ID :- 463, **Answer A-III,B-I,C-IV,D-II**

Question ID:- 117

List I	List II
A. Kents Repertorium Generale	I. Robin Murphy
B. Homoeopathic Medical Repertory	II. J P S Bakshi
C. The Phoenix Repertory	III. Roger Von Zandvoort
D. Repertorium Universal	IV. Kunzli Jost

Match List I with List II. Choose the correct answer from the options given below:- Options:-

- .A - II, B - III, C - IV, D - I , Option ID :- 467 ,
- .A - III, B - I, C - IV, D - II , Option ID :- 465 ,
- .A - IV, B - I, C - II, D - III , Option ID :- 468 ,
- .A - IV, B - II, C - I, D - III , Option ID :- 466, **Answer A - IV, B - I, C - II, D - III ,**

Question ID:- 118

Which of the following chapter in Kent's repertory does not start with the rubric 'Daytime'?

Options:-

- .Cough, Option ID :- 469 ,
- .Expectoration, Option ID :- 470 ,
- .Generality, Option ID :- 472 ,
- .Respiration, Option ID :- 471, **Answer Respiration**

Question ID:- 119

The Concordance Repertory of the Materia Medica by William D Gentry was published in which year?

Options:-

.1879, Option ID :- 473 ,

.1881, Option ID :- 474 ,

.1890, Option ID :- 475 ,

.1896, Option ID :- 476,

Answer 1890,

Question ID:- 120

Given below are two statements: one is labeled as Assertion A and the other is labeled as Reason R.

Assertion A : Symptoms which are expected to be present in a case but remain absent are called Negative symptoms.

Reason R : Long standing symptoms, which the patient think are part and parcel of their normal functioning, are known as Accidental symptoms.

In the light of the above statements, choose the correct answer from the options given below:-

Options:-

.A is false but R is true, Option ID :- 480 ,

.A is true but R is false, Option ID :- 479 ,

.Both A and R are true and R is the correct explanation of A, Option ID :- 477 ,

.Both A and R are true but R is NOT the correct explanation of A, Option ID :- 478, **Answer A is true but R is false,**

Question ID:- 121

The only remedy in rubric "Shrieking, screams, cries out, paroxysmal" in Boger Boenninghausen Characteristics and Repertory is:-

Options:-

.Apis mell, Option ID :- 484 ,

.Ignatia, Option ID :- 483 ,

.Natrum mur, Option ID :- 481 ,

.Stramonium, Option ID :- 482, **Answer Ignatia**

Question ID:- 122

Who authored the first Homoeopathic Pharmacopoea? Options:-

.Dr. C. Caspari , Option ID :- 486 ,

.Dr. C. Hering , Option ID :- 485 ,

.Dr. H. C. Allen , Option ID :- 487 ,

.Dr. J. H Clarke , Option ID :- 488, **Answer Dr. C. Caspari ,**

Question ID:- 123

Drug power of Moschus, according to the new method of preparation of homoeopathic medicine is:-

Options:-

.1/100, Option ID :- 492 ,

.1/10, Option ID :- 489 ,

.1/20, Option ID :- 490 ,

.1/60, Option ID :- 491, **Answer 1/20,**

Question ID:- 124

Which class of nosodes are prepared from microorganism, viruses, clinical material from human convalescence or diseased subjects?

Options:-

.N-III, Option ID :- 495 ,

.N-II, Option ID :- 494 ,

.N-I, Option ID :- 493 ,

.N-IV, Option ID :- 496,

Answer N-IV

Question ID:- 125

List I	List II
A. Belladonna	I. Class-IV
B. Thuja	II. Class-III
C. Scilla	III. Class-I
D. Staphysagria	IV. Class-II

Match List I with List II. Choose the correct answer from the options given below:-

Options:-

.A - II, B - III, C - IV, D - I , Option ID :- 497 ,

.A - III, B - I, C - IV, D - II , Option ID :- 499 ,

.A - III, B - IV, C - II, D - I , Option ID :- 498 ,

.A - IV, B - I, C - II, D - III , Option ID :- 500, **Answer A - III, B - IV, C - II, D - I** ,

Question ID:- 126

Arrange the following oils according to their descending saponification value.

- A. Lanolin
- B. Olive oil
- C. Almond oil
- D. Coconut oil

Choose the correct answer from the options given below:- Options:-

.A, B, C, D , Option ID :- 501 ,

.B, A, D, C , Option ID :- 502 ,

.C, D, A, B , Option ID :- 503 ,

.D, B, C, A , Option ID :- 504,

Answer D, B, C, A ,

Question ID:- 127

Statement I : An ideal prescription consist of four parts, i.e superscription, inscription, subscription and signature.

Statement II : Signature part of prescription gives direction to be given to the patient regarding the administration of the drug.

In the light of the above statements, choose the Correct answer from the options given below:-

Options:-

.Both Statement I and Statement II are false, Option ID :- 506 ,

.Both Statement I and Statement II are true, Option ID :- 505 ,

.Statement I is correct but Statement II is false, Option ID :- 507 ,

.Statement I is incorrect but Statement II is true, Option ID :- 508, **Answer Both Statement I and Statement II are true,**

Question ID:- 616

Match the List I with List II :

List I List II

A. Kallmann syndrome I. Pituitary destruction by

ischemia

B. Mayer Rokitansky Kuster

Hauser Syndrome II. Low or absent GnRH

C. Sheehan's syndrome III. Uterine synechia

D. Ashermann syndrome IV. Absence of uterus

Choose the correct answer from the options given below: Options:-

.A - II, B - III, C - I, D - IV , Option ID :- 2463 ,

.A - II, B - III, C - IV, D - I , Option ID :- 2464 ,

.A - II, B - IV, C - I, D - III , Option ID :- 2462 ,. Answer

.A - III, B - IV, C - I, D - II , Option ID :- 2461,

Join AIAPGET 20 21 MD ENTRANCE TEST SERIES FOR SURE SUCCESS

REGISTER NOW

www.homoeoadda.in

AIAPGET 20 21 MD ENTRANCE Test Series

www.homoeoadda.in

Key features of Online Test Series:

- 🍁 Participate in the Online Tests TWICE a week till AIAPGET 2021.

- 🍁 Test availability- Till AIAPGET 20 21,For All INDIA RANKING Entire week, 24x7. (Give test at your convenience). Attempt from Anywhere, Anytime

- 🍁 Real Time GUI,Both Laptop/Pc & Mobile
- 🍁 Topicwise Test Till November
- Subject-wise tests from Dec--feb
- thereafter Mock Tests till AIAPGET 2021(Total **100** Mock Test)
- 🍁 Topic wise Test schedule & Subjectwise given in Pdf format separately
- 🍁 Daily personal Topic based ASSIGNMENT for more EFFECTIVE learning

- 🍁 Instant submission with Result and Answer EXPLANATION only @HOMOEOADDA, REATTEMPT
- 🍁 National platform to compete with the best brains of the nation.
- 🍁 Get AI Rank for better assessment.

🍁 Smart Learning,24*7 Expert help desk

🍁 E-Study Materials with Test Series

For details,start whatsapp telegram chat or call us 📞7455964281

Don't waste Time ,Only at HOMOEOADDA you get your personal mentor 4 Success



5:51 pm ✓✓

28 SEPTEMBER 2020

Hi sir 7:30 pm

Thanks for the plan of aiapget 2020 ...really helped me a lot 7:31 pm

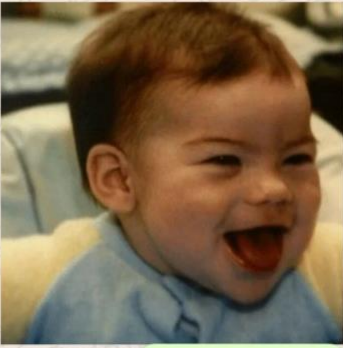
I did well today 7:31 pm

Hopefully will get very good rank 7:31 pm

You deleted this message 7:35 pm

😊 7:35 pm

I was always thinking why homeoadda papers are tough compared to others I got answer today 👍 7:36 pm



7:37 pm ✓✓

